



Title I Advisory Council Report to the School Board

School Year 2017-18

(updated version, May 2018)

Agenda

- Purpose of the TAC
- TAC membership and way of work
- Purpose of this meeting
- Observations and Recommendations

Purpose of the TAC

Assist the Superintendent and the School Board in making decisions pertaining to Title I schools in Leon County and to support and assist each Title I school in outlining and addressing the needs of their school community.

Purpose of the TAC

TAC's participation in the decision-making process shall be advisory in nature, and it shall accomplish its purpose by:

- Investigating, informing, discussing Title I school issues and concerns identified by the schools, the Superintendent, the School Board, the community, the parents and the students, and
- Recommending and evaluating possible ways to use Title I funding to address these issues and concerns, and
- Performing other such duties as appropriate to the advising process.

TAC membership and way of work

- Membership and representation
- Monthly TAC meetings since September 2016
- Presentations by each Title I School Principal
- Data requested, received and reviewed

Purpose of this meeting

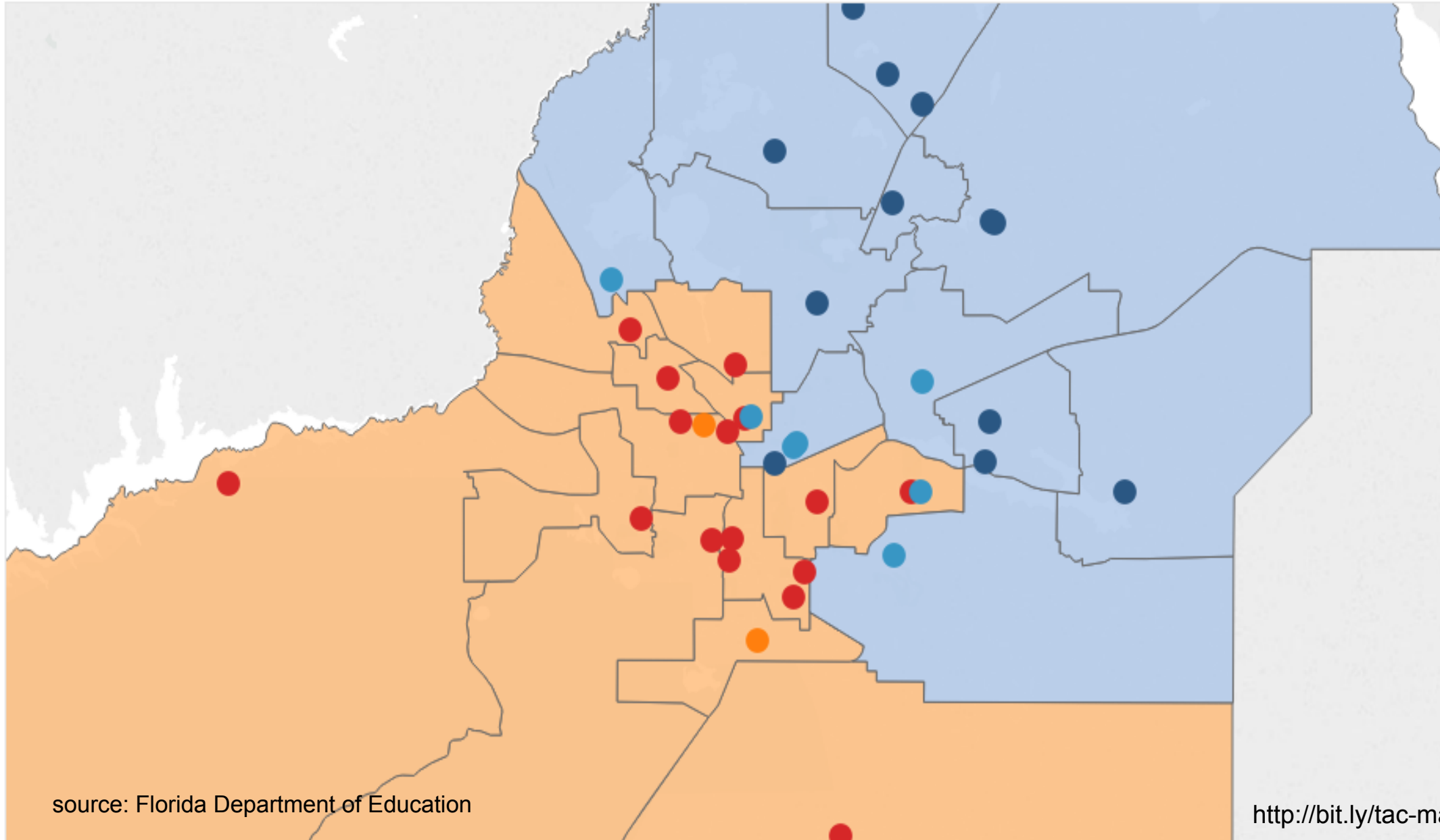
- Opportunity to share our findings with the School Board
- Opportunity to make recommendations
- Opportunity to discuss such findings and recommendations
- Opportunity to give a sense of future work, focus, goals

Observations and Recommendations

- Demographics of the District and Title I schools
- Early learning
- Best Practices
- Partnerships between schools
- Partnerships across the County

All schools LEON - elementary school zones

School Grade/Title I 2017



School Grade

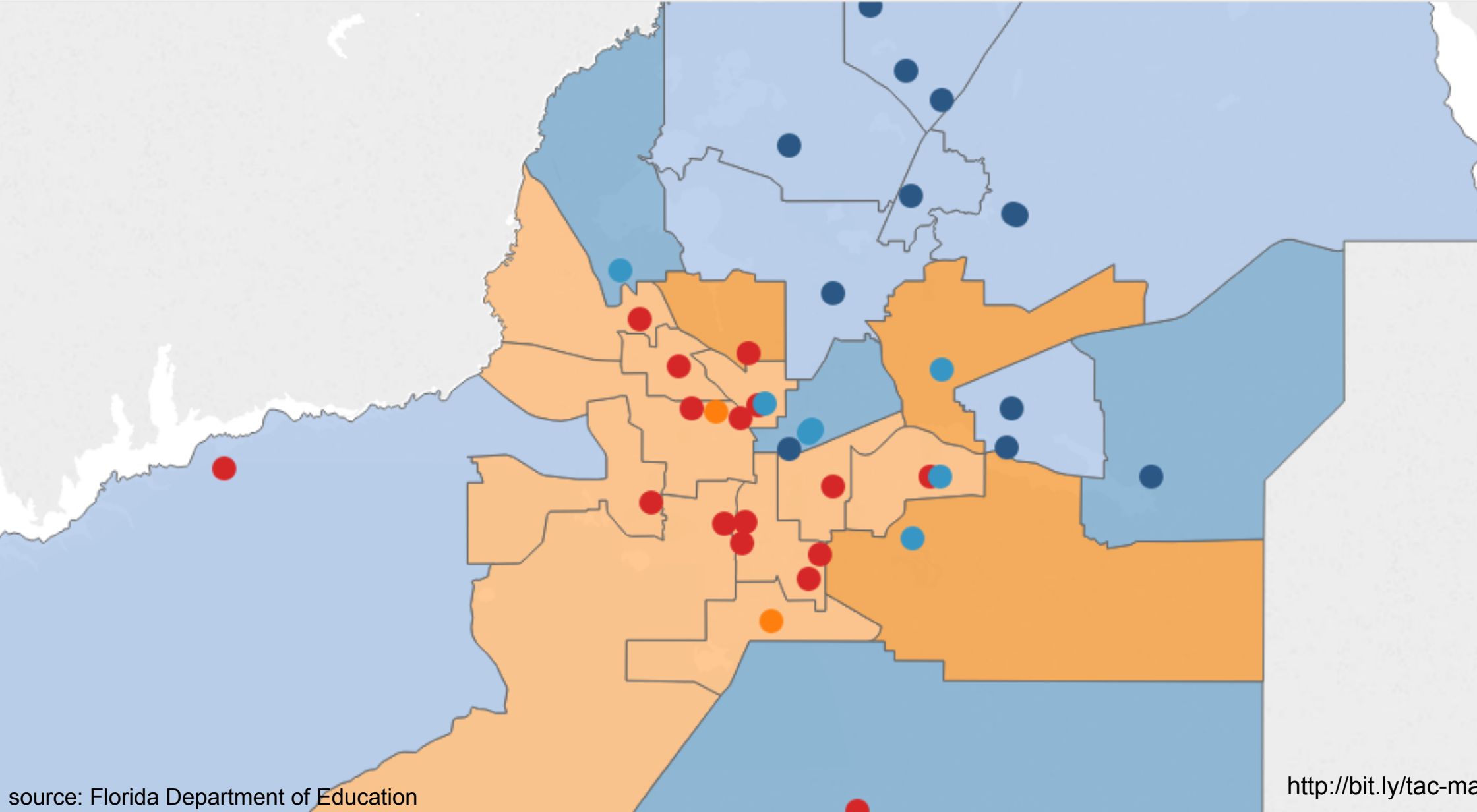
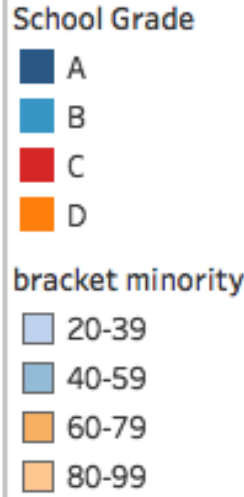
- A
- B
- C
- D

Title I

- no
- yes

All schools LEON - elementary school zones

School Grade/Minority rate 2017



source: Florida Department of Education

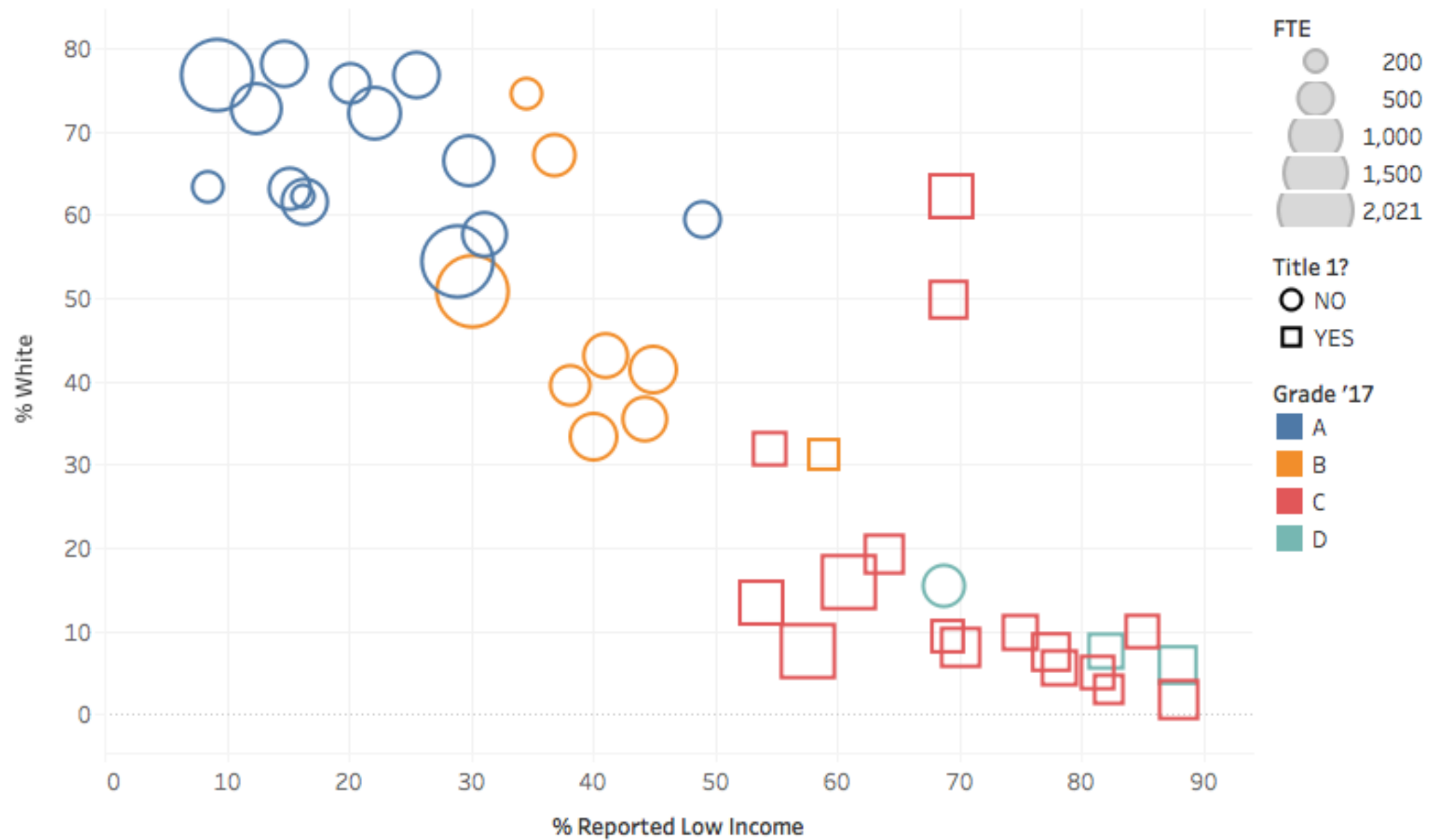
SCHOOL	GRADE '17	GRADE '16	CHART?	TITLE 1?	FTE	% MINORITY	% ECON DIS
THE SCHOOL OF ARTS AND SCIENCE ON THON	A	A	YES	NO	383	36.7	8.4
LAWTON CHILES HIGH SCHOOL	A	A	NO	NO	2003	23.3	9.3
DEERLAKE MIDDLE SCHOOL	A	A	NO	NO	951	27.3	12.5
KILLEARN LAKES ELEMENTARY SCHOOL	A	A	NO	NO	806	21.9	14.9
BUCK LAKE ELEMENTARY SCHOOL	A	A	NO	NO	685	36.8	15.4
THE SCHOOL OF ARTS & SCIENCE CENTRE	A		YES	NO	200	37.8	16.3
HAWKS RISE ELEMENTARY SCHOOL	A	A	NO	NO	832	38.5	16.9
DESOTO TRAIL ELEMENTARY SCHOOL	A	A	NO	NO	664	24.3	21.0
WILLIAM J MONTFORD III MIDDLE SCHOOL	A	A	NO	NO	1060	27.8	22.2
ROBERTS ELEMENTARY SCHOOL	A	A	NO	NO	816	23.1	26.0
LEON HIGH SCHOOL	A	B	NO	NO	2010	45.5	28.4
LINCOLN HIGH SCHOOL	B	C	NO	NO	2021	49.1	29.0
GILCHRIST ELEMENTARY SCHOOL	A	A	NO	NO	986	33.4	30.3
SWIFT CREEK MIDDLE SCHOOL	A	A	NO	NO	769	42.4	31.1
J MICHAEL CONLEY ELEMENTARY SCHOOL A	B	C	NO	NO	780	64.5	43.6
SAIL	B	B	NO	NO	370	25.4	57.1
CANOPY OAKS ELEMENTARY SCHOOL	B	C	NO	NO	708	32.9	59.3
W T MOORE ELEMENTARY SCHOOL	B	C	NO	NO	619	60.6	60.1
ELIZABETH COBB MIDDLE SCHOOL	B	B	NO	NO	854	66.6	64.0
KATE SULLIVAN ELEMENTARY SCHOOL	B	C	NO	NO	759	56.9	65.4
GOVERNOR'S CHARTER SCHOOL	D	C	YES	NO	675	84.6	68.8
RAA MIDDLE SCHOOL	B	B	NO	NO	858	58.5	71.8
CHAIRES ELEMENTARY SCHOOL	A	B	NO	NO	504	40.5	78.9

SCHOOL	GRADE '17	GRADE '16	CHART?	TITLE 1?	FTE	% MINORITY	% ECON DIS
FAIRVIEW MIDDLE SCHOOL	C	B	NO	YES	846	86.7	86.0
SEALEY ELEMENTARY SCHOOL	C	B	NO	YES	474	68.2	86.7
JAMES RICKARDS HIGH SCHOOL	C	D	NO	YES	1267	92.5	90.7
TALLAHASSEE SCHOOL OF MATH & SCIENCE	B	C	YES	YES	398	68.9	94.1
AMOS P. GODBY HIGH SCHOOL	C	C	NO	YES	1241	84.1	95.0
FORT BRADEN SCHOOL	C	C	NO	YES	829	37.7	100
WOODVILLE ELEMENTARY SCHOOL	C	A	NO	YES	*593	50.2	100
SPRINGWOOD ELEMENTARY SCHOOL	C	C	NO	YES	650	80.8	100
SABAL PALM ELEMENTARY SCHOOL	C	C	NO	YES	497	90.1	100
RUEDIGER ELEMENTARY SCHOOL	C	C	NO	YES	522	90.3	100
FRANK HARTSFIELD ELEMENTARY SCHOOL	C	D	NO	YES	443	90.7	100
APALACHEE ELEMENTARY SCHOOL	C	C	NO	YES	650	91.9	100
ASTORIA PARK ELEMENTARY SCHOOL	C	D	NO	YES	571	92.5	100
OAK RIDGE ELEMENTARY SCHOOL	D	D	NO	YES	518	92.5	100
JOHN G RILEY ELEMENTARY SCHOOL	D	C	NO	YES	605	94.2	100
GRIFFIN MIDDLE SCHOOL	C	C	NO	YES	538	94.5	100
R. FRANK NIMS MIDDLE SCHOOL	C	D	NO	YES	465	95.0	100
PINEVIEW ELEMENTARY SCHOOL	C	D	NO	YES	360	97.0	100
BOND ELEMENTARY SCHOOL	C	C	NO	YES	631	98.4	100

*includes middle school

source: Florida Department of Education

Leon County Schools, 2017



source: Florida Department of Education

Early Learning

- Strengthen and increase access to school readiness programs: in partnership with Early Learning Coalition and Head Start, offer more screening, reach more children and parents living in Title I school zones, consider including parent skills/support programs.
- When possible, encourage families to leverage Head Start funding during the school year and use VPK funding in the summer before kindergarten to ensure year-long care and maximize the benefit of VPK; look into establishing/hosting more summer VPK programs in Title I schools.

Early Learning

- Intervene and remediate as early as possible in elementary school; explore ways to bridge gaps and grades to ensure students are promoted with supports in place; coordinate between schools to better serve our transient student population.
- Prioritizing Elementary schools in the allocation of Title I funds; examining the effect of disproportionate allocations in districts that prioritize Elementary schools over Middle and High.

Per student funding - 2016

ELEMENTARY SCHOOLS	General	Special Revenue	Combined	Fundraising TOTAL	FTE 2016	Fundraising per student	Total funds per student
Apalachee *	\$7,002.00	\$839.00	\$7,841.00	\$ 111,862.06	621	\$180.13	\$8,021.13
Astoria Park *	\$7,016.00	\$852.00	\$7,868.00	\$ 82,463.98	591	\$139.53	\$8,007.53
Bond *	\$7,358.00	\$1,053.00	\$8,411.00	\$ 53,778.70	652	\$82.48	\$8,493.48
Buck Lake	\$7,649.00	\$273.00	\$7,922.00	\$ 145,584.00	669	\$217.61	\$8,139.61
Canopy Oaks	\$6,875.00	\$19.00	\$6,894.00	\$ 121,551.23	695	\$174.89	\$7,068.89
Chaires	\$8,876.00	\$455.00	\$9,331.00	\$ 57,225.33	455	\$125.77	\$9,456.77
Conley	\$6,775.00	\$46.00	\$6,821.00	\$ 139,339.87	863	\$161.46	\$6,982.46
DeSoto Trail	\$7,434.00	\$312.00	\$7,746.00	\$ 140,081.62	669	\$209.39	\$7,955.39
Ft. Braden *	\$6,924.00	\$971.00	\$7,895.00	\$ 95,174.43	774	\$122.96	\$8,017.96
Gilchrist	\$6,525.00	\$199.00	\$6,724.00	\$ 246,305.31	1,048	\$235.02	\$6,959.02
Hartsfield *	\$8,898.00	\$1,122.00	\$10,020.00	\$ 47,802.96	439	\$108.89	\$10,128.89
Hawks Rise	\$7,132.00	\$305.00	\$7,437.00	\$ 124,876.03	850	\$146.91	\$7,583.91
Killearn Lakes	\$7,523.00	\$212.00	\$7,735.00	\$ 115,755.58	832	\$139.13	\$7,874.13
Moore	\$7,044.00	\$256.00	\$7,300.00	\$ 128,469.32	621	\$206.87	\$7,506.87
Oak Ridge *	\$7,824.00	\$993.00	\$8,817.00	\$ 61,402.58	507	\$121.11	\$8,938.11
Pineview *	\$7,988.00	\$1,158.00	\$9,146.00	\$ 14,202.62	366	\$38.80	\$9,184.80
Riley *	\$7,007.00	\$978.00	\$7,985.00	\$ 57,321.97	554	\$103.47	\$8,088.47
Roberts	\$7,881.00	\$469.00	\$8,350.00	\$ 214,907.65	816	\$263.37	\$8,613.37
Ruediger *	\$7,725.00	\$1,160.00	\$8,885.00	\$ 25,373.40	494	\$51.36	\$8,936.36
Sabal Palm *	\$7,447.00	\$1,092.00	\$8,539.00	\$ 30,858.89	554	\$55.70	\$8,594.70
Sealey *	\$9,027.00	\$1,170.00	\$10,197.00	\$ 43,000.77	509	\$84.48	\$10,281.48
Springwood *	\$7,163.00	\$843.00	\$8,006.00	\$ 130,363.75	690	\$188.93	\$8,194.93
Sullivan	\$6,607.00	\$304.00	\$6,911.00	\$ 122,452.79	837	\$146.30	\$7,057.30
Woodville *	\$7,736.00	\$1,113.00	\$8,849.00	\$ 40,801.03	547**	\$74.59	\$8,923.59
Elementary Schools Aver	\$7,476.50	\$674.75	\$8,151.25	\$ 2,350,955.87		\$140.80	\$8,292.05
Title I Schools Average	\$7,624.23	\$1,026.46	\$8,650.69			\$104.03	\$8,754.73
Non-Title Schools Averag	\$7,301.91	\$259.09	\$7,561.00			\$184.25	\$7,745.25
Difference Title I vs Non	\$322.32	\$767.37	\$1,089.69			-\$80.21	\$1,009.48

**includes elem
and middle
school students

Title I schools are
getting 14% more

Per student funding - 2016

MIDDLE SCHOOLS	General	Special Revenue	Combined	Fundraising TOTAL	FTE 2016	Fundraising per student	Total funds per student
Cobb	\$6,153.00	\$172.00	\$6,325.00	\$ 156,730.34	866	\$180.98	\$6,505.98
Deerlake	\$6,355.00	\$158.00	\$6,513.00	\$ 517,766.66	934	\$554.35	\$7,067.35
Fairview	\$6,324.00	\$193.00	\$6,517.00	\$ 230,695.27	813	\$283.76	\$6,800.76
Griffin *	\$7,595.00	\$1,136.00	\$8,731.00	\$ 61,588.85	519	\$118.67	\$8,849.67
Montford	\$6,452.00	\$217.00	\$6,669.00	\$ 285,026.12	1021	\$279.16	\$6,948.16
Nims *	\$7,941.00	\$933.00	\$8,874.00	\$ 37,556.65	442	\$84.97	\$8,958.97
Raa	\$6,314.00	\$199.00	\$6,513.00	\$ 190,666.84	894	\$213.27	\$6,726.27
Swift Creek	\$6,726.00	\$210.00	\$6,936.00	\$ 324,791.41	724	\$448.61	\$7,384.61
Middle Schools Average	\$6,732.50	\$402.25	\$7,134.75	\$ 1,804,822.14		\$270.47	\$7,405.22
Title I Schools Average	\$7,768.00	\$1,034.50	\$8,802.50			\$101.82	\$8,904.32
Non-Title I Schools Average	\$6,387.33	\$191.50	\$6,578.83			\$326.69	\$6,905.52
Difference Title I vs Non Title I	\$1,380.67	\$843.00	\$2,223.67			-\$224.87	\$1,998.80

Source: Leon County Schools

Title I schools are
getting 33% more

Per student funding - 2016

HIGH SCHOOLS	General	Special Revenue	Combined	Fundraising TOTAL	FTE 2016	Fundraising per student	Total funds per student
Chiles	\$5,821.00	\$137.00	\$5,958.00	\$ 1,301,274.44	2031	\$640.71	\$6,598.71
Godby *	\$6,574.00	\$708.00	\$7,282.00	\$ 539,776.74	1273	\$424.02	\$7,706.02
Leon	\$5,660.00	\$148.00	\$5,808.00	\$ 1,140,922.98	2113	\$539.95	\$6,347.95
Lincoln	\$5,692.00	\$150.00	\$5,842.00	\$ 1,235,005.99	2092	\$590.35	\$6,432.35
Rickards *	\$6,870.00	\$700.00	\$7,570.00	\$ 652,574.81	1284	\$508.24	\$8,078.24
High School Average	\$6,123.40	\$368.60	\$6,492.00	\$ 4,869,554.96		\$540.65	\$7,032.65
Title I Schools Average	\$6,722.00	\$704.00	\$7,426.00			\$466.13	\$7,892.13
Non-Title I Schools Average	\$5,724.33	\$145.00	\$5,869.33			\$590.33	\$6,459.67
Difference Title I vs Non Title I	\$997.67	\$559.00	\$1,556.67			-\$124.20	\$1,432.46

Title I schools are
getting 26% more

Source: Leon County Schools

Best Practices

- Examine best practices at A-graded Title I schools in Florida

School Name (% minority - % econo. disadv.)	Location
GREENFIELD ELEMENTARY SCHOOL (68.8% - 100%)	Duval
HENRY KITE ELEMENTARY SCHOOL (91% - 100%)	
BISCAYNE ELEMENTARY SCHOOL (90% - 100%)	
ALEXANDER ELEMENTARY SCHOOL (95% - 92%)	Hillsborough
COLLINS ELEMENTARY SCHOOL (88%-93%)	Broward
HOWARD MCMILLAN MIDDLE SCHOOL (94%-78%)	Dade
ROCKWAY MIDDLE SCHOOL (97%-84%)	
LORENZO WALKER TECH. HIGH SCHOOL (81%-79%)	Collier

Best Practices

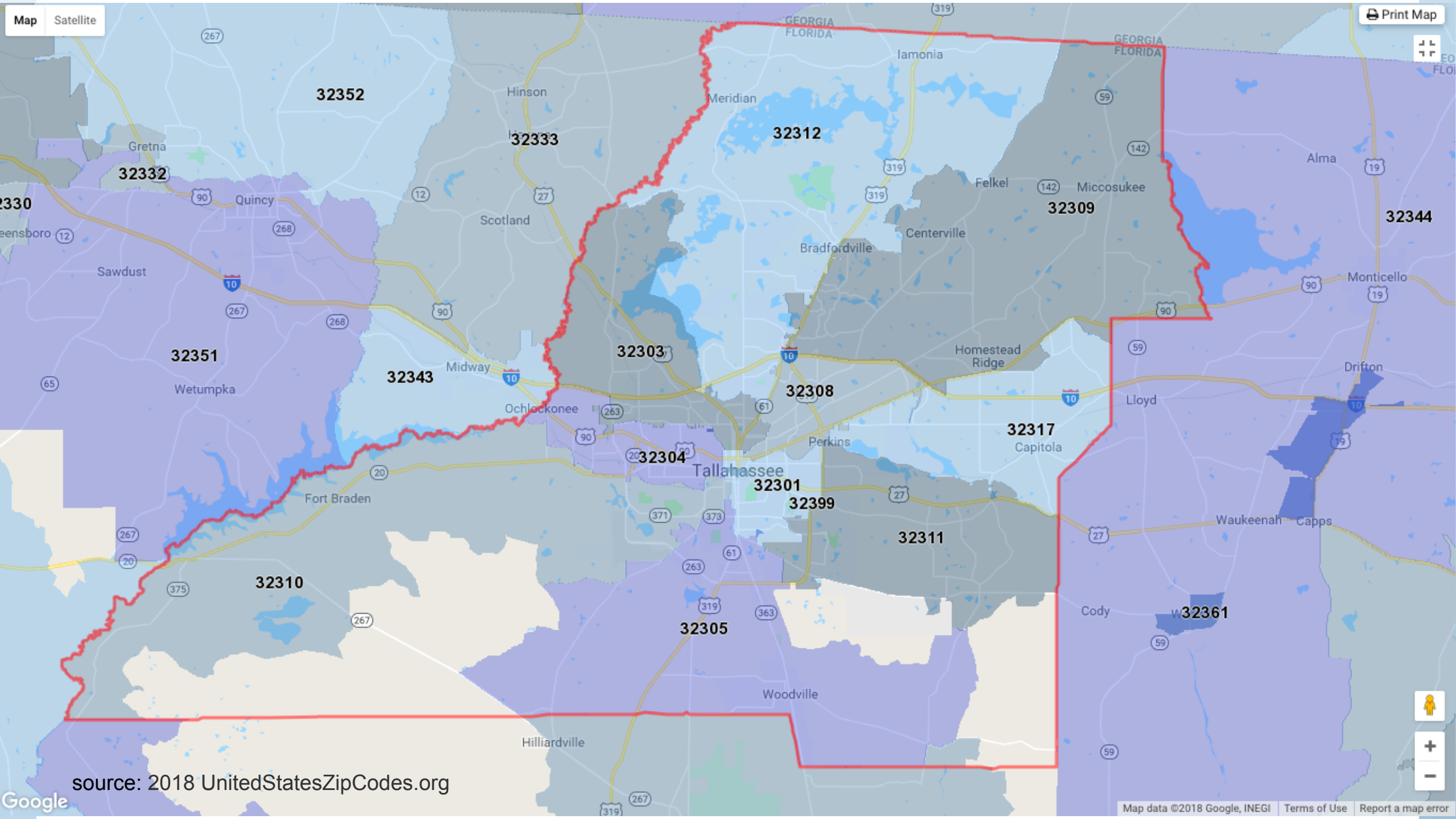
- Replicate innovative and successful strategies and practices across Leon County (Title I and non-Title I schools).
- Explore incentives used in other districts to attract and retain teachers and paras at Title I schools.
- Strengthening Title I School Advisory Councils and PTOs.

Partnerships between schools

- Partnering among Title I schools for efficiency gains in programs such as after school enrichment, summer bridge programs, professional development opportunities, parent engagement initiatives.
- Strengthening feeder patterns and supporting continuity between Title I school communities.
- Establishing pilot programs to implement one or more proposed recommendations; seeking funding through state and federal sources, including grant programs.

Partnerships across the County

- Recognizing that the issue goes beyond the school district.
- Establish partnerships with businesses, agencies, and local government.



source: 2018 UnitedStatesZipCodes.org

All schools LEON - elementary school zones

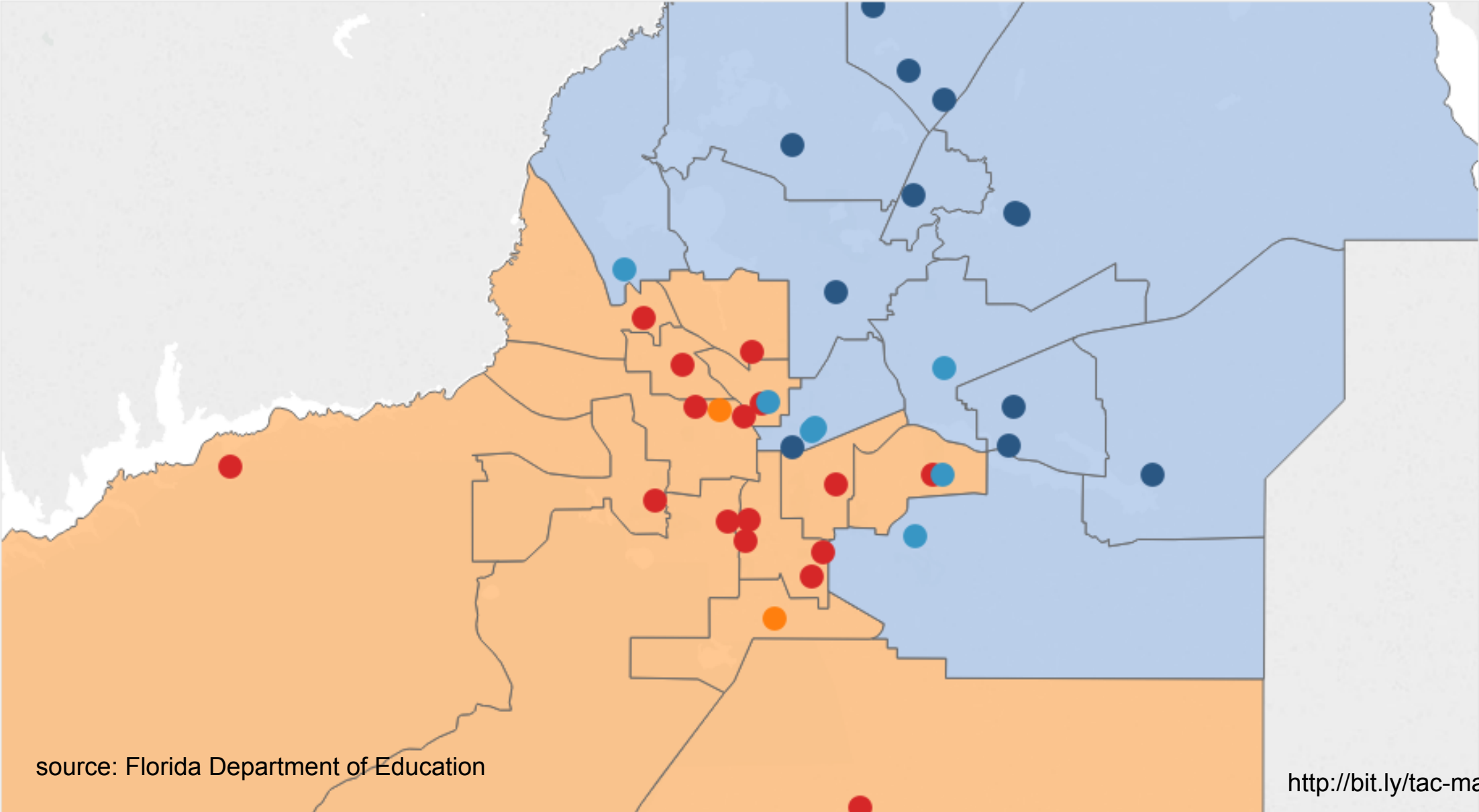
School Grade/Title I 2017

School Grade

- A
- B
- C
- D

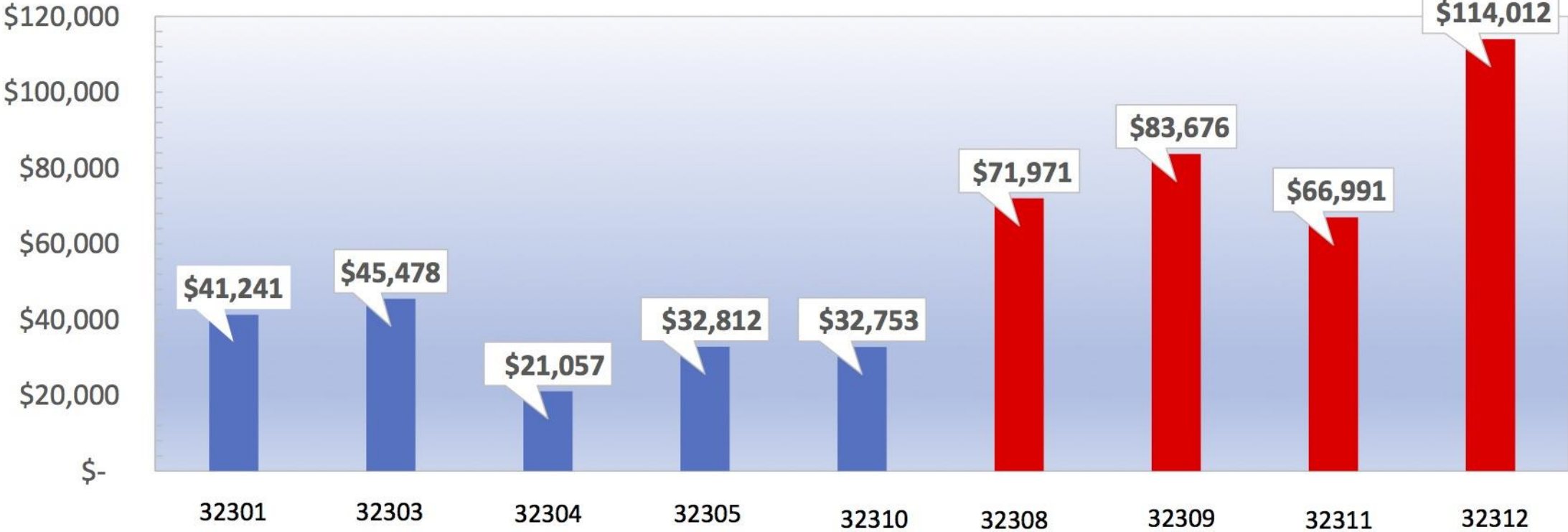
Title I

- no
- yes



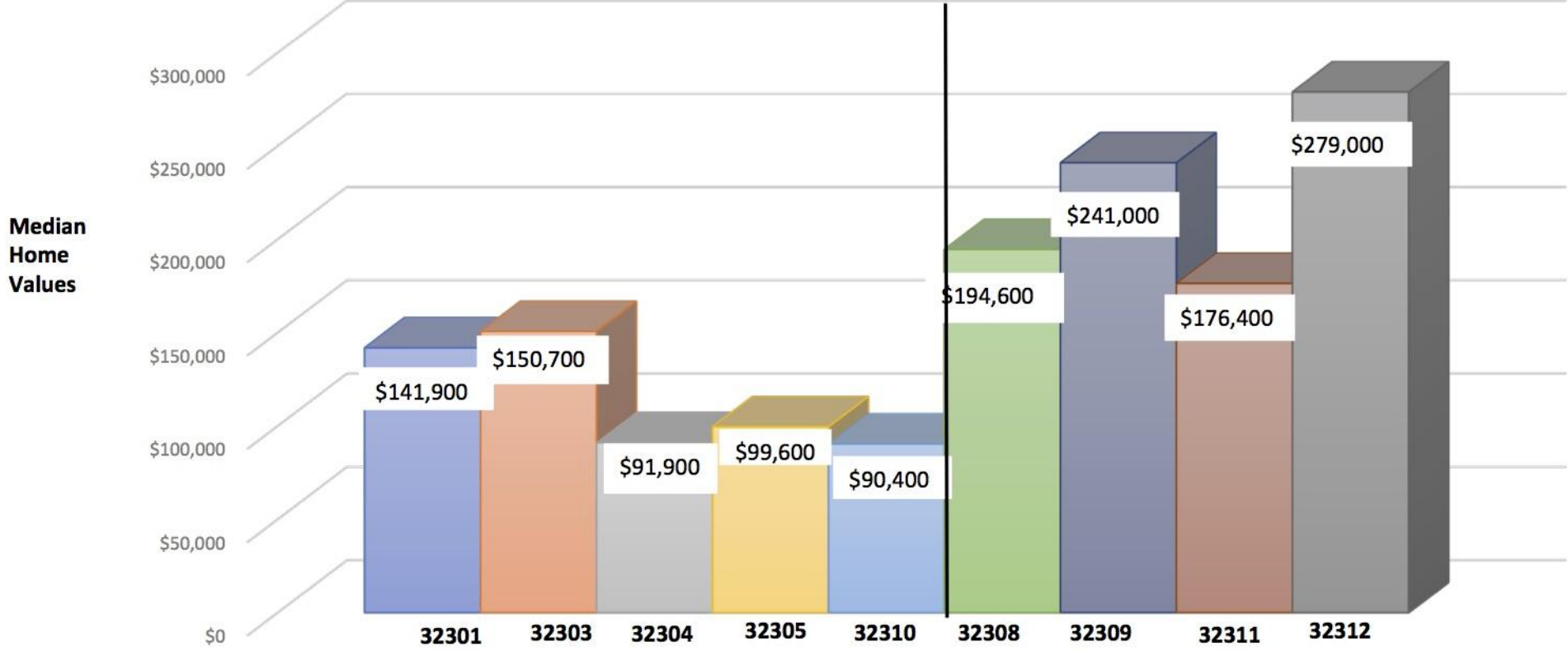
source: Florida Department of Education

Average Income for Selected Zip Codes: Leon County



source: 2018 UnitedStatesZipCodes.org

Leon County Median Home Values by Zip Code



source: 2018 UnitedStatesZipCodes.org

Partnerships across the County

- Establish community partnerships with non-profit organizations to serve our students' needs in a coordinated and timely manner.
- Community school initiative
- Citizen Committee to take an in depth look at our school zones

Representing the TAC:

Bridgett Birmingham, Robert Conners, Talethia Edwards, Latrenda Jackson, Marie-Claire Leman, Steve Mills, Mary Jo Peltier, Joi Phillips, Allison Stachnik, Dana Wiley, Charles Williams.

Many thanks to all TAC members and contributors, as well as to the Leon County School Board and District for their support. In particular, thanks to Bev Owens, Ava Williams, Brenetta Lawrence, Pam Hightower, Merrill Wimberley, Jamie Holleman, Giselle Marsh, Michelle Gayle, Gillian Gregory, and everyone who has been so helpful in providing data and answering questions.

March 26, 2018 (updated version, May 2018)

